



**Greenwich  
College**  
SYDNEY - AUSTRALIA



**ENGLISH & TEACHER TRAINING**

# Introduction

Welcome to Greenwich College	03
Sydney	04
About Greenwich College	06
Pathways	07
General English	08
IELTS Preparation	10
Cambridge FCE Preparation	12
Certificate IV in EAP	14
TECSOL / Certificate IV in TECSOL	16
Certificate IV in TESOL	18
Ready for Work	20
Vocational Outcomes / Frequently Asked Questions	22
Accreditations and Associations	23

## MESSAGE FROM THE MANAGEMENT TEAM:

At Greenwich College, the management team is guided by the philosophy that we must "invest in people".

We understand that success relies on the efforts of every person involved, at each and every step – this includes teachers, staff, representatives, college and university partners, the local community, and students.

This underlying philosophy has enabled Greenwich College to become an innovative leader within the English Language and Teacher Training industry, highly regarded by peers, staff, competitors, representatives, and students alike.

### At Greenwich College we aim to:

- Be the employer of choice by offering our staff a friendly work environment and the best career development opportunities.
- Be the partner of choice for representatives and suppliers by ensuring we provide the fastest and friendliest service.
- Have the most innovative and intensive English Language and Teacher Training programs.
- Be at the forefront of the English Language and Teacher Training industry.
- Ensure that each and every student achieves their learning objectives and reaches their goals.

**"Greenwich College...  
...Investing in People"**

Principal  
Ben Lunn



Director of Studies  
Sasha Wajnryb



General Manager  
Shin Shimizu



# Welcome



At Greenwich College we have students from over 38 different countries, speaking more than 26 different languages. This allows students to not only learn English in a fun and friendly environment, but to also meet and make friends from all over the world.

To learn English effectively, Greenwich College is very aware that teachers are an important part of the learning experience. We have carefully selected native English speaking teachers to teach the most innovative and highest quality English Language and Teacher Training programs available today.

Excellent teachers, quality programs, and a fun yet inducing learning environment ensure our students learn quickly and effectively. At Greenwich College, we have a course to suit just about anyone:

- English Language programs to improve your English.
- Academic English programs with partner pathways (direct entry agreements) into some of Australia's leading colleges, TAFE NSW, and universities.
- Teacher Training and Ready for Work programs for work and lifestyle opportunities in Australia and around the world.



'I have just finished at Greenwich College and am now working in Sydney. When I arrived I was a shy Elementary student. The teachers took care of me and gave me the confidence to experiment with my English. I quickly worked my way up to Upper-Intermediate and have just passed my FCE Exam – I have made so many friends and am so grateful to have this experience. A special thanks to all my teachers. You are wonderful.'

Veronika Odvarkova  
(Czech Republic)



'I have been studying at Greenwich College for 5 months. I have learned a lot from the teachers, not just about English, but about life. The school is full of people from so many different countries, it's amazing! I am so happy I am here.'

Loi Ko I  
(Macau)

# Sydney



## KEY FACTS ABOUT SYDNEY:

Sydney, the oldest city in Australia and the capital of New South Wales has a population of approximately 4.5 million people, making it also the largest city in Australia (Australian population more than 21 million).

The city is set on one of the world's most beautiful harbours, with beaches, tourist attractions and national parks all within easy reach of the city. This cosmopolitan, multicultural, and diverse city offers more entertainment, festivals, dining options, shopping, and sightseeing than any other place in Australia.

Students at Greenwich College, which is located right in the heart of Sydney, are within easy access to all of these sights and attractions.

As Sydney is also the gateway to the rest of Australia, it is very easy to explore beyond Sydney either within New South Wales or interstate. Australia, with its spectacular natural environment and scenery, multicultural communities, contemporary arts and culture, world class events, food and wine and the friendliness of its people, combined with its weather and lifestyle, make it amongst the world's most popular destinations.

**WEATHER:** Sydney enjoys more than 240 sunny days per year!

	JAN	FEB	MAR	APR	MAY	JUN
MAXIMUM (°C)	25.8	26.2	25.2	22.8	20.3	17.7
MINIMUM (°C)	19.2	19.3	18.0	15.2	12.0	9.6
	JUL	AUG	SEP	OCT	NOV	DEC
MAXIMUM (°C)	17.1	17.8	20.4	22.2	23.7	25.6
MINIMUM (°C)	8.4	8.9	11.5	14.1	16.0	18.0

Source: Bureau of Meteorology, Sydney Weather Observatory HQ, [www.bom.gov.au](http://www.bom.gov.au)

Sydney has a temperate climate due to its proximity to the sea, with mild winters and warm summers. The summer season is from December through to February, and the winter season from June through to August.



## GETTING ABOUT SYDNEY:

Sydney has a public transport network made up of buses, trains, and ferries, all of which are cost effective, reliable and convenient ways to travel in and around Sydney and surrounding areas.

Greenwich College is conveniently located in the heart of the city of Sydney, close to all public transport including Town Hall Station, Central Station with major bus stops at the door, and shopping and dining precincts and attractions all within walking distance.

Further information including maps, fares and timetables for buses, trains, and ferries is available at [www.131500.com.au](http://www.131500.com.au).



## WHAT GREENWICH COLLEGE STUDENTS ENJOY DOING IN SYDNEY:

- Dining out in restaurants serving authentic cuisine from all over the world or enjoying the outdoor café scene.
- Shopping in internationally renowned department stores or discovering small boutique specialty stores in small suburban back streets.
- Exploring local food and craft markets to find a bargain on most Saturdays and Sundays in various locations in and around Sydney.



- Experiencing the vibrant culture and friendliness of the Australian people, the great weather and laid back lifestyle, and the multicultural community that is Sydney.
- Visiting contemporary and modern art galleries and museums. Also Aboriginal and other historical and heritage sites.
- Enjoying the many fun-packed events held throughout the year such as major international events, sport, music and arts festivals, and food and culture exhibitions.



- Walking along white sandy beaches, surfing acclaimed surf breaks, swimming crystal clear waters or snorkeling/diving with abundant marine life in marine parks.
- Bush walking in national parks, or visiting local Sydney tourist attractions such as the Opera House, Harbour Bridge, wildlife parks, zoos, aquariums, and the botanical gardens.
- Catching the ferry across Sydney harbour, the most beautiful in the world, to one of the many harbour-side suburbs or surfing beaches.



# About Greenwich College



## THE COLLEGE:

Owned by teachers and managed by staff who have a long and successful history of teaching English and managing schools in Australia, Asia and Europe, Greenwich College has extensive first-hand experience in understanding the needs and challenges of students learning English.

Since establishing itself in Sydney in 2005, Greenwich College has been an innovative leader within the English Language and Teacher Training industry, being the first English Language College in Sydney to deliver the Ready For Work programs (RSA, RCG, and RFH), as well as being the first in Australia (and the world) to deliver the Certificate IV in TECSOL program.

The reputation and high regard for the College, the growing number of college/university partnerships, and the continuous student satisfaction feedback is testament to the success of not only our English Language and Teacher Training programs but also to our staff who have helped Greenwich College establish a culture focusing on students and their needs.

## THE FACILITIES AND SERVICES:

Greenwich College is a modern campus located in the heart of Sydney offering facilities and services designed to cater to student needs.

### Facilities:

- Fully equipped, well lit and spacious air-conditioned classrooms.
- Student lounge with computers, free internet access, and large flat screen TV.
- Wireless internet access.
- Student kitchen and dining room with hot/cold water, refrigerator, and microwave ovens.
- Food and drink vending machines.
- Student photocopier/printer.
- Mobility impaired access.

### Services:

- Friendly, caring, and knowledgeable staff.
- Staff who can speak a wide range of languages including Chinese, Japanese, Korean, Polish, Portuguese and Spanish.
- Student counsellors to help you settle into your new life in Sydney.

- Airport pickup and Homestay placement.
- College and university pathways and continuing study options.
- Academic course counselling.
- OSHC arrangement.
- Job preparation assistance such as Tax File Number applications, advice on the Australian work system, resume and letter preparation, and job interview tips.
- Student activities, excursions and party nights.



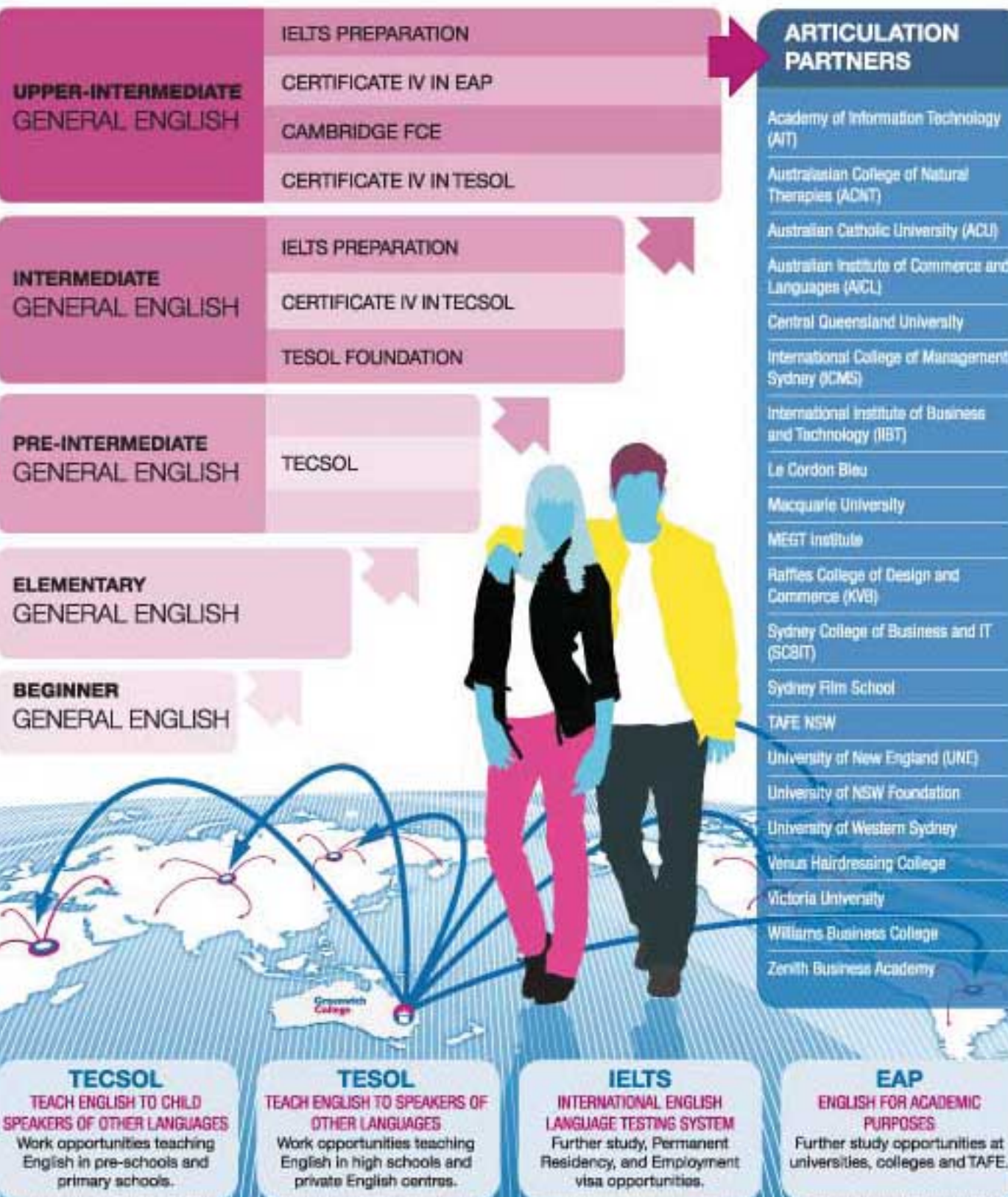
'I heard that Greenwich had the best IELTS preparation course in Australia. I have just completed my IELTS course and now I think it's true. I have learned so much more than I could have imagined. I wish I had more time to spend here. The services provided for students here are first-class. It seems that all staff know who you are and want to help. I received wonderful advice on my accommodation, my study and my career. I have a lot of confidence going into my exam next week and am looking forward to coming back to show my teachers my results fingers crossed!'

Landy Meti Keruko  
(Papua New Guinea)

# Pathways

## GREENWICH COLLEGE PATHWAYS:

- PATHWAYS** • To further study at Greenwich College.
- PATHWAYS** • To further study opportunities in Australia (colleges, TAFE and universities), and around the world.
- PATHWAYS** • To work and lifestyle opportunities in Australia and around the world.



# General English

## DAY & EVENING CLASSES

Course CRICOS Code 059969M



Friday Elective - Drama



### GENERAL ENGLISH:

General English develops language skills so that students can communicate confidently and fluently in English speaking environments; whilst travelling, at work, and in social and everyday situations.

Experienced teachers use communicative teaching methodology that provides plenty of interaction and practice in small classes of no more than 15 students per class. Lessons focus on meeting the learning needs and goals of the students and with useful feedback and support from our teachers, students develop skills and confidence faster.

### DURATION AND HOURS:

#### DAY CLASSES

- Courses start every Monday
- Monday to Friday, 9:00am to 3:00pm
- (Part-time 9:00am to 11:50am OR 12:30pm to 3:00pm)
- Study 1 to 52 weeks

#### EVENING CLASSES

- Courses start every Monday
- Monday to Friday, 4:00pm to 8:30pm
- (Part-time 4:00pm to 6:00pm OR 6:30pm to 8:30pm)
- Study 1 to 52 weeks

### SAMPLE TIMETABLE:

DAY CLASSES			EVENING CLASSES		
CLASS	PERIOD	DURATION	CLASS	PERIOD	DURATION
Lesson 1	9:00am - 10:20am	80 minutes	*English Club	3:10pm - 4:00pm	50 minutes
Lesson 2	10:30am - 11:50am	80 minutes	Lesson 1	4:00pm - 4:55pm	55 minutes
Lesson 3	12:30pm - 1:40pm	70 minutes	Lesson 2	5:00pm - 6:00pm	60 minutes
Lesson 4	1:50pm - 3:00pm	70 minutes	Lesson 3	6:30pm - 7:25pm	55 minutes
*English Club	3:10pm - 4:00pm	50 minutes	Lesson 4	7:30pm - 8:30pm	60 minutes

### ENTRY REQUIREMENTS:

- ✓ No minimum English entry requirements - students of all English levels can join.
- ✓ Greenwich College Placement Test every Monday at 9:00am (Day classes) and Monday 4:00pm (Evening classes).

### COURSE OUTLINE:

General English develops English language skills for use in everyday situations. It is a fast and effective way for students to improve their overall English language skills.

General English develops and builds English language skills;

- Reading, writing and listening skills
- Structure, grammar, vocabulary, and idioms
- Speaking, pronunciation and fluency skills
- Communication and conversation strategies

### ENGLISH CLUB \*English Club is an optional class

English Club provides all Greenwich College students with additional English classes. English Club is free and available Monday to Thursday. It gives students the chance to obtain additional English lessons and gain valuable practice.

Students who regularly attend English Club also receive free gifts from Greenwich College including coffee and lunch vouchers, movie tickets and Sydney day trips. All English Club lessons are provided by Trainee-Teachers under the supervision of a qualified Greenwich College teacher.

### GENERAL ENGLISH LEVELS:

- 1 Beginner
- 2 Elementary
- 3 Pre-Intermediate
- 4 Intermediate
- 5 Upper-Intermediate

Students who reach "Level 6 - Advanced" have three study options. These programs offer advanced students a challenge at all macro-skill levels. Study options include: IELTS Preparation, Cambridge FCE, and/or English for Academic Purposes (EAP).



### FRIDAY ELECTIVE CLASSES: (DAY CLASSES ONLY)

General English day classes consist of core English language classes Monday to Thursday, and Elective classes every Friday. Students can study different Elective classes each week. This allows students to customise their program to suit their individual and specific needs.

### SAMPLE FRIDAY ELECTIVE CLASSES:

CLASS	CLASS DESCRIPTION	ENGLISH LEVEL
Listening/Language Analysis	Analyse contextual language using movies and documentaries	All levels
Conversation/Grammar	Study grammar and put directly into practice through conversation	All levels
Excursion/Activity	Social and practical use of English whilst visiting interesting places/special events in Sydney and making friends	Pre-Intermediate +
Exam Preparation	Learn skills and techniques for TOEIC and other examinations	All levels
Newsletter	Study and utilise interview skills, discussion and research methods, and varied writing styles to create a newsletter	All levels
Special	Cooking, Sports, Drama Club etc	All levels



'I am very happy that I made the decision to study General English at Greenwich College. I love the quality of teaching and it's nice to be in a classroom with people from different countries, it's enjoyable. All teachers are very helpful and friendly and there's always someone who naturally takes care of you.'

Agnieszka Banas  
(Poland)

## 11 REASONS WHY YOU SHOULD STUDY GENERAL ENGLISH AT GREENWICH COLLEGE

1. Day and Evening classes (Full-time and Part-time study options)
2. 25 hours (day) / 20 hours (evening) face-to-face teaching per week
3. No 'self study' periods
4. Nationality specific 'Pronunciation' classes weekly (day classes only)
5. Weekly progress tests and one-on-one student counselling
6. Free English with Greenwich College English Club
7. Lessons with qualified native English-speaking teachers
8. Student study electives every Friday (day classes only)
9. Weekly Australian classes
10. Level specific students own text book
11. Student-run market days

# IELTS Preparation

## DAY & EVENING CLASSES

Course CRICOS Code 059969M



### INTERNATIONAL ENGLISH LANGUAGE TESTING SYSTEM PREPARATION:

The IELTS course develops language skills while preparing students for the IELTS test.

IELTS (International English Language Testing System) is the standard language test used for entry into universities in Australia, Britain and many universities in the United States. It is also used as a standard test for entry to TAFE, private and government institutions, and when seeking permanent residency and employment visas in Australia.

Greenwich College has direct entry (articulation) agreements with some of Australia's leading Universities and Colleges (including TAFE NSW).

### DURATION AND HOURS:

#### DAY CLASSES

- ♦ Courses start every Monday
- ♦ Monday to Friday, 9:00am to 3:00pm
- ♦ (Part-time 9:00am to 11:50am)
- ♦ Study 1 to 52 weeks

#### EVENING CLASSES

- ♦ Courses start every Monday
- ♦ Monday to Friday, 4:00pm to 8:30pm
- ♦ (Part-time 6:30pm to 8:30pm)
- ♦ Study 1 to 52 weeks

### SAMPLE TIMETABLE:

CLASS	DAY	EVENING	MONDAY	TUESDAY	WEDNESDAY	THURSDAY	FRIDAY
Lesson 1	9:00am - 10:20am	4:00pm - 5:00pm	Speaking intro / Topic intro / Jigsaw reading	Speaking Reading	IELTS Speaking	Reading	Practice test Writing
Lesson 2	10:30am - 11:50am	5:10pm - 6:00pm	Vocabulary Building	Listening	Listening (Dictogloss)	Listening (ABC Radio News)	Practice test Reading
Lesson 3	12:30pm - 1:40pm	6:30pm - 7:20pm	Group Discussion	Listening Speaking	Listening (Dictogloss)	Writing Task 1 (Academic)	Practice test Listening
Lesson 4	1:50pm - 3:00pm	7:30pm - 8:30pm	Writing Task 2	Vocabulary and Speaking	Reading	Writing Task 1 (General)	Practice test Speaking

### ENTRY REQUIREMENTS:

- ✓ 4.5 IELTS General Training Module; or
- ✓ Greenwich College Entry Test every Tuesday and Thursday at 9:00am and 4:00pm;
- ✓ Offshore Entry Test available through our registered representatives.

### COURSE OUTLINE:

The Greenwich College IELTS Preparation course is designed to develop students' competency in listening, reading, writing and speaking while preparing students for the IELTS test (General Training and Academic Training Modules).

### IELTS classes will develop and improve;

- ♦ Test-focused listening skills
- ♦ Academic writing skills
- ♦ Speaking fluency and accuracy
- ♦ Vocabulary based around typical test themes
- ♦ Knowledge of grammar, vocabulary, functions, register and discourse
- ♦ English proficiency in the areas of listening, reading, writing and speaking
- ♦ Practical test strategies for pre-reading, organisation and timing
- ♦ Overall test taking skills through continued test practice

### IELTS TEST INFORMATION:

All candidates are tested in listening, reading, writing and speaking. Candidates take the same Listening and Speaking Modules, however there is a choice of Reading and Writing Modules.

This exam tests your ability to use English. A score in each of the subtests and an overall (average) score is recorded as a level of proficiency called a Band. The nine bands of language ability are described in general terms below.

For more information about the IELTS test or to find the nearest testing centre visit [www.ielts.org](http://www.ielts.org).

### WEEKLY PRACTICE TEST

Every Friday students will sit an authentic practice test. These tests are taken under real test conditions so students become familiar with the atmosphere in the testing centres and the behaviours that will be expected in order to maximise their scores.

Weekly test results allow students to track their progress and learn more about the weaknesses that need more work as well as to qualify students who want to take advantage of one of our partner university or college articulations.

BAND	GENERAL DESCRIPTOR	LEVEL
<b>BAND 9</b>	Has fully operational command of the language: appropriate, accurate and fluent with complete understanding.	<b>EXPERT USER</b>
<b>BAND 8</b>	Has fully operational command of the language with only occasional unsystematic inaccuracies and inappropriacies. Misunderstandings may occur in unfamiliar situations. Handles complex detailed argumentation well.	<b>VERY GOOD USER</b>
<b>BAND 7</b>	Has operational command of the language, though with occasional inaccuracies, inappropriacies and misunderstandings in some situations. Generally handles complex language well and understands detailed reasoning.	<b>GOOD USER</b>
<b>BAND 6</b>	Has generally effective command of the language despite some inaccuracies, inappropriacies and misunderstandings. Can use and understand fairly complex language, particularly in familiar situations.	<b>COMPETENT USER</b>
<b>BAND 5</b>	Has partial command of the language, coping with overall meaning in most situations, though is likely to make many mistakes. Should be able to handle basic communication in own field.	<b>MODEST USER</b>
<b>BAND 4</b>	Basic competence is limited to familiar situations. Have frequent problems in understanding and expression. Is not able to use complex language.	<b>LIMITED USER</b>
<b>BAND 3</b>	Conveys and understands only general meaning in very familiar situations. Frequent breakdowns in communication occur.	<b>EXTREMELY LIMITED</b>
<b>BAND 2</b>	No real communication is possible except for the most basic information using isolated words or short formulae in familiar situations and to meet immediate needs. Has great difficulty understanding spoken and written English.	<b>INTERMITTENT USER</b>
<b>BAND 1</b>	Essentially has no ability to use the language beyond possibly a few isolated words.	<b>NON USER</b>



'I enjoyed every minute of my class at Greenwich! It's the best choice I could have ever made. I'm now at TAFE NSW studying Fashion Design, and I have no problem keeping up with my studies - My class prepared me for everything. All I can say is that I use almost everything I learnt from my class. Thanks to Greenwich and all credit to my teacher Zoe!'

Pisit Imchit  
(Thailand)

## 11 REASONS WHY YOU SHOULD STUDY IELTS PREPARATION AT GREENWICH COLLEGE

1. Day and Evening classes (Full-time and Part-time) study options
2. Average improvement of 1 band score in 8-10 weeks
3. More than 12 IELTS examiners on staff
4. Direct Entry (Articulations) into Australia's leading college and universities
5. 25 hours (day) / 20 hours (evening) face-to-face teaching per week
6. No 'self study' periods
7. Lessons with qualified native English-speaking IELTS teachers
8. Level specific students own text book
9. Authorised IELTS pre-test centre
10. Weekly interviews and mock examinations
11. Regular full-school social activities

# Cambridge FCE Preparation

## DAY & EVENING CLASSES

CRICOS Code 059969M



### FIRST CERTIFICATE IN ENGLISH EXAM PREPARATION

The Cambridge First Certificate in English (FCE) is awarded by University of Cambridge ESOL Examinations, UK and is recognised all over the world. FCE is ideal if you want to work and study abroad or develop a career which requires English language skills.

The Greenwich College course is designed to prepare students to pass the FCE exam by developing language skills and confidence in the tested areas of Speaking, Listening, Reading, Writing, and Use of English.

### DURATION AND HOURS:

#### DAY CLASSES

- Monday to Friday, 9:00am to 3:00pm
- 10/12 week course
- Contact Greenwich College for start dates

#### EVENING CLASSES

- Monday to Friday, 4:00pm to 8:30pm
- 10/12 week course
- Contact Greenwich College for start dates

### SAMPLE TIMETABLE:

CLASS	DAY	EVENING	MONDAY	TUESDAY	WEDNESDAY	THURSDAY	FRIDAY
Lesson 1	9:00am - 10:20am	4:00pm - 5:00pm	Use of English	Vocabulary English Roots	Video Lesson	Listening Skills	Revision Test
Lesson 2	10:30am - 11:50am	6:10pm - 6:00pm	Current Affairs	Grammar Future Forms	Writing Practice	Conversation Skills	Mock Exam Reading
Lesson 3	12:30pm - 1:40pm	6:30pm - 7:20pm	Listening Skills	Study Skills	Reading Skills	Presentations	Mock Exam Use of English
Lesson 4	1:50pm - 3:00pm	7:30pm - 8:30pm	Exam practice Use of English	Conversation Skills	Phrasal Verbs with 'bring'	Mock Exam Speaking	Mock Exam Timed Writing

### ENTRY REQUIREMENTS:

- ✓ 6.0 IELTS General Training Module; or
- ✓ TOEIC/TOEFL equivalent; or
- ✓ Greenwich College Entry Test every Tuesday and Thursday at 9:00am and 4:00pm;
- ✓ Offshore Entry Test available through our registered representatives.

### COURSE OUTLINE:

FCE is an internationally recognised qualification that is valid for life. Passing the FCE test demonstrates that a student has a high level of English. A Pass in this test will allow students to work in many industries where contact with English speakers is required. Students will have the ability to deal with routine letters and telephone enquiries, cope with academic training courses, understand textbooks, newspaper and journal articles and understand people talking in English on radio or television programmes.



### CAMBRIDGE FCE TEST INFORMATION:

An outline of the test as well as the examiner's expectations of the student are outlined below:

SECTION	TASKS	TARGET ENGLISH LEVEL
<b>PART 1 READING</b>	Be able to understand information in fiction and non-fiction books, journals, newspapers and magazines.	<ul style="list-style-type: none"> <li>Read articles and reports concerned with contemporary problems in which the writers adopt particular attitudes or viewpoints</li> <li>Understand contemporary literary prose</li> <li>Understand gist, main points, detail, text structure</li> <li>Extract specific information and deduce meaning</li> </ul>
<b>PART 2 WRITING</b>	Show you can produce two different pieces of writing such as a short story, a letter, an article, a report, a review or an essay.	<ul style="list-style-type: none"> <li>Write clear, detailed text on a wide range of subjects related to student's interests</li> <li>Write an essay or report, passing on information or giving reasons in support of or against a particular point of view</li> <li>Write letters highlighting the personal significance of events and experiences</li> </ul>
<b>PART 3 USE OF ENGLISH</b>	Show how well you control your grammar and vocabulary.	<ul style="list-style-type: none"> <li>Actively control the grammar and vocabulary of the language and demonstrate competence in a variety of tasks: multiple choice cloze, open cloze, word transformation, error correction, word formation</li> </ul>
<b>PART 4 LISTENING</b>	Show you can understand the meaning of a range of spoken material, including news programs, speeches, stories and anecdotes and public announcements.	<ul style="list-style-type: none"> <li>Understand extended speech and lectures and follow even complex lines of argument provided the topic is reasonably familiar.</li> <li>Understand most TV news and current affairs programs</li> <li>Understand the majority of films in standard dialect</li> <li>Understand gist, main points, detail or specific information, or the deduction of meaning</li> </ul>
<b>PART 4 SPEAKING</b>	You will take the Speaking test with another candidate or in a group of three, and you will be tested on your ability to take part in different types of interaction: with the examiner, with the other candidates and by yourself.	<ul style="list-style-type: none"> <li>Interact with a degree of fluency and spontaneity that makes regular interaction with native speakers quite possible</li> <li>Take an active part in discussion in familiar contexts, accounting for and sustaining student's views</li> <li>Present clear, detailed descriptions on a wide range of subjects related to student's field of interest</li> <li>Explain a viewpoint on a topical issue giving the advantages and disadvantages of various options</li> <li>Produce spoken English in a variety of tasks</li> </ul>



'My teachers were amazing! I can never remember being impatient to join a class. It was the best 22 weeks of study that I have ever had. If I had the opportunity I would have carried on studying with them and when I go back to Turkey, I'll definitely recommend this course. Have you thought about starting a school in Turkey?'

Elif Gun  
(Turkey)

## 11 reasons why you should study Cambridge FCE Preparation at Greenwich College

1. Day and Evening flexible study options
2. Weekly interviews and mock examinations
3. Speaking interviews done with other Greenwich students
4. Small closed group classes
5. 25 hours (day) / 20 hours (evening) face-to-face teaching per week
6. No 'self study' periods
7. Lessons with qualified native English-speaking FCE teachers
8. FCE specific student's own text book
9. One-on-one counselling with teacher
10. High success rate of Greenwich College test candidates
11. Authorised FCE pre-test centre

# Certificate IV in EAP

Course CRICOS Code 061155J Course Code 91123NSW



## CERTIFICATE IV IN ENGLISH FOR ACADEMIC PURPOSES:

This course is designed especially for students looking to study in universities and colleges in Australia. Greenwich College has numerous academic pathways that enable graduates from this program to meet the English proficiency requirements for entry into some of Australia's finest universities.

The Certificate IV in EAP is intended to improve students' academic English language skills before going onto higher education in an English-speaking country and focuses on helping students to be successful at the tasks done at university, such as conducting seminar presentations, essay writing, listening while note taking and understanding lectures.

## DURATION AND HOURS:

### CLASSES

- Monday to Friday, 9:00am to 3:00pm
- 16 weeks
- No 'self study' periods
- Contact Greenwich College for start dates

## SAMPLE TIMETABLE:

CLASS	DAY	MONDAY	TUESDAY	WEDNESDAY	THURSDAY	FRIDAY
Lesson 1	9:00am - 10:20am	Vocabulary Development Topic: Politics	Listening in Academic Contexts Predicting	Academic Writing & Research Sentence Problems	Grammar Development Future Predictions & Present Tense	Computing Skills Websites to Assist Learning
Lesson 2	10:30am - 11:50am	Listening in Academic Contexts Mini lecture: Government & Politics	Academic Writing & Research Parallelism	Listening in Academic Contexts Predicting	Academic Writing & Research Sentence Problems	Current Affairs Broadsheet: Politics
Lesson 3	12:30pm - 1:40pm	Academic Reading Skills Discussion essay: General Comprehension	Academic Reading Skills The Australian political system	Academic Reading Skills Newspaper Article: Current Political Issue	Seminar Presentation Skills Introductions and Using Attention Grabbing Devices	Seminar Presentation Skills Practice Introductions
Lesson 4	1:50pm - 3:00pm	Computing Skills Using Microsoft PowerPoint	Tutorial Discussion Skills Small groups: Agreeing & Disagreeing	Tutorial Discussion Skills Discussion: Urbanization	Academic Writing & Research Editing Practice	Testing & Assessment

## ENTRY REQUIREMENTS:

- ✓ 5.5 IELTS General Training Module; or
- ✓ Greenwich College Entry Test every Tuesday and Thursday at 9:00am and 4:00pm; or
- ✓ Offshore Entry Test available through our registered representatives.

## COURSE OUTLINE:

While many students choose to take EAP as a direct pathway to an Australian university, many choose this program as an interesting alternative to General English or other academic English courses. The curriculum allows for English to be learned in a wide variety of interesting ways that both challenge and stimulate. Lessons are always communicative and rely heavily on interaction by all class members. Assessment is conducted throughout the course and closely resembles the kind of tasks that students will need to undertake at university.

EAP courses are so useful that many native English speakers say they wish they had undertaken such a course before going to university – they say they would have gotten a better grade in their degree, and student life would have been easier!

## PATHWAYS:

Greenwich College has articulation agreements with leading universities and institutes. These articulation agreements provide further study pathways through direct entry into courses offered by our university and institute partners. Students graduating from Greenwich College do not have to sit for IELTS or TOEFL.

To gain direct entry into courses offered by our university and institute partners, students of Greenwich College need to successfully complete the Greenwich College IELTS Preparation courses or Certificate IV in English for Academic Purposes (EAP). All students should contact Greenwich for a full list of partner colleges and universities.

## UNIT DESCRIPTIONS:

ELEMENT	DESCRIPTION
1940AA Introduction to English Language Study	Students examine, analyse and reflect on their own learning processes.
4907B Tutorial Discussion Skills	Students learn how to effectively participate in tutorial discussions and group work.
4907D Academic Writing and Research Skills	Students learn how to research and write an academic essay.
3750B Operate a Word Processing Application	Students learn how to use a computer to enhance their language studies and how to present assessed work appropriately.
4907A Seminar Presentation Skills	Students develop confidence in delivering oral presentations culminating in the presentation of a 20 minute seminar.
4907C Listening in Academic Contexts	The focus is on providing students with the skills necessary to understand academic lectures and use effective note-taking strategies.
4907E Academic Reading Skills	The focus is on providing students with the skills necessary to understand a broad range of academic texts.
9572K English for Basic Computing	Skills taught are designed to ensure that students become competent computer users and are able to apply language appropriate to communicating in English for basic computer use.

## VOCATIONAL OUTCOMES:

On successful completion of the course, not only will students' English have improved, but they will be well prepared for university study and will also graduate with a Certificate IV in English for Academic Purposes (91123NSW).



'I arrived in Australia not knowing how I would continue onto university. The helpful staff at Greenwich showed me the best way to improve my Academic English while gaining a pathway to my dream course. The teachers at Greenwich were exceptional. Their support helped me gain a scholarship to Macquarie University. I am now in my second semester of Business Management and am very happy!'

Elisa Razolli  
(Italy)

## 11 REASONS WHY YOU SHOULD STUDY EAP AT GREENWICH COLLEGE

1. Direct pathways to leading colleges and universities
2. Avoid the stress of having to do the IELTS test
3. Learn in an authentic school environment
4. Study with students from Asia, Europe, Africa and Latin America
5. Class sizes are always small, with only top-quality teachers
6. Course accredited by VETAB (NSW Vocational Education body)
7. Build confidence in public speaking
8. Rapid improvement in English skills
9. 25 hours (day) face-to-face teaching per week
10. Regular full school social activities
11. Meet new friends and study together over the duration of the course





## TEACHING ENGLISH TO CHILD SPEAKERS OF OTHER LANGUAGES:

Teaching English to Child Speakers of Other Languages (TECSOL) is an intensive introduction to teaching English to children aged between 4 and 12 years of age.

### DURATION AND HOURS:

#### CLASSES

- Courses start every Monday
- Monday to Friday, 9:00am to 3:00pm
- 4 weeks
- Includes one week practicum (pre-school placement)

### ENTRY REQUIREMENTS:

- ✓ 4.5 IELTS General Training Module; or
- ✓ Greenwich College Entry Test every Tuesday and Thursday at 9:00am and 4:00pm;
- ✓ Offshore Entry Test available through our registered representatives.

### COURSE OUTLINE:

This foundation course in TECSOL provides trainees with an introduction to the theory and practice of teaching English to children. Trainees are introduced to a range of modern techniques and strategies that are specifically designed to engage young learners as children and adults learn in different ways. TECSOL methods are used for teaching children, while TESOL methods are used for teaching adults. Throughout the course trainees learn everything they need to effectively teach children.

### PRE-SCHOOL PLACEMENT:

(TECSOL and Certificate IV in TECSOL)

Learning about children is not complete without the true experience of actually working with them. Greenwich College arranges for every TECSOL trainee to spend one week at an Australian pre-school. Trainees experience first-hand what it's like to teach and play with children of all ages. It is the perfect way to put into real practice the knowledge learnt on the course and is also a great way to experience a professional work environment.

COURSE COMPARISON CHART	TECSOL	CERT IV TECSOL
Introduction to teaching EFL/ESL to children.	✓	✓
Advanced techniques of teaching EFL/ESL to children.		✓
Introduction to activity-based lessons .	✓	✓
Advanced activity-based lessons and an introduction to alternative styles of lesson planning (such as song, story and cultural event-based lessons).		✓
Receive a government accredited certification.		✓
Plan a syllabus, work in a professional environment and manage a school.		✓
Learn 20 traditional songs and chants.	✓	✓
Learn an additional 30 traditional and contemporary songs and chants with special emphasis on physical actions, movement and music.		✓
3 elective classes in phonics, craft and teaching games.	✓	✓
An additional 2 elective classes (in phonics, craft and teaching games).		✓
Create basic teaching resources (such as flash cards, production games and activity worksheets).	✓	✓
Create advanced teaching resources (such as puppets, masks, books, and making use of internet resources).		✓
Learn 30 activities and teaching games.	✓	✓
Learn additional 20 activities and teaching games.		✓
One week of working with children in a pre-school.	✓	✓



## CERTIFICATE IV IN TEACHING ENGLISH TO CHILD SPEAKERS OF OTHER LANGUAGES:

This Certificate IV in TECSOL is Australia's first and only VETAB accredited course. It is designed for people who wish to become professional teachers of English to child speakers of other languages or those who wish to have their previous experience endorsed with a qualification.

### DURATION AND HOURS:

#### CLASSES

- Courses start every Monday
- Monday to Friday, 9:00am to 3:00pm
- 6 weeks
- Includes one week practicum (pre-school placement)

### COURSE OUTLINE:

This advanced program follows on from the TECSOL course and provides trainees with an in depth understanding of contemporary TECSOL methodologies, as well as their practical applications in the classroom. The Certificate IV in TECSOL is a unique qualification which enables graduates to deliver age-appropriate lessons in a variety of teaching contexts. The Australian Government recognizes that these skills will prepare trainees for teaching English in kindergartens, pre-schools, primary schools and young learner academies.

### ENTRY REQUIREMENTS:

- ✓ 5.5 IELTS General Training Module; or
- ✓ Greenwich College Entry Test every Tuesday and Thursday at 9:00am and 4:00pm; or
- ✓ Offshore Entry Test available through our registered representatives.

### ON THIS COURSE TRAINEES WILL:

- Learn how to design age-specific lessons for children
- Learn to teach reading, writing, listening and speaking through activity-based lessons
- Study TECSOL theories and teaching methodologies
- Work on a wide range of teaching skills and techniques that are fun for the classroom
- Choose classes in phonics, craft or games & activities
- Develop skills in syllabus design
- Learn more than 50 games and teaching activities and more than 30 songs and chants
- Gain valuable experience working with real children in preschools and kindergartens
- Receive a Learning Pack that includes: textbook, Games & Activities book, study materials, flash cards, audio tools, pens and other assorted materials

## 11 REASONS WHY YOU SHOULD STUDY TECSOL AT GREENWICH COLLEGE?

1. Australia's only VETAB accredited TECSOL provider
2. 1-week placement in local kindergarten
3. Teaching children English is becoming the focus of many international governments
4. 25 hours face-to-face teaching per week
5. No 'self study' periods
6. Lessons with qualified native English-speaking TECSOL trainers
7. All course materials produced by Greenwich College
8. Build confidence in public speaking
9. Interesting elective programs allowing trainees to choose their pathway
10. Regular full-school social activities
11. Learn and sing more than 50 English songs!



'I quit my stable job in Korea to come to Australia and now I can say that my decision was the right one. I studied General English to improve my speaking and then TECSOL. The course was great; I learnt a lot about teaching kids and got to spend a week in a pre-school applying my classroom knowledge. After graduating from the TECSOL course I got a job straight away..'

Ae Ry Park (Korea)

# Certificate IV in TESOL

## DAY & EVENING CLASSES

Course CRICOS Code 059969M Course Code 91370NSW



### CERTIFICATE IV IN TEACHING ENGLISH TO SPEAKERS OF OTHER LANGUAGES:

The course is designed for people without previous teaching experience who wish to pursue English language teaching as a profession or for those who, while having some teaching EFL experience wish to have this experience endorsed with a qualification. This is all done while highlighting the latest in English teaching techniques.

With the Certificate IV in TESOL you can teach around the world. In Australia, the course is recognized by VETAB (Vocational Educational Training and Accreditation Board) and together with a degree or a diploma in education; students meet the minimum NEAS requirements to teach overseas students in Australia.

### DURATION AND HOURS:

#### DAY CLASSES

- Courses start every Monday
- Monday to Friday, 10am to 4pm
- 8 weeks

#### EVENING CLASSES

- Courses start every Monday
- Monday to Friday, 3:00pm to 8:30pm
- 8 weeks

### SAMPLE TIMETABLE: Day & Evening

CLASS	DAY	EVENING	MONDAY	TUESDAY	WEDNESDAY	THURSDAY	FRIDAY
Lesson 1	10:00am - 11:20am	4:10pm - 5:30pm	Weekly Review	Professional Teacher Demo	Linguistics 1	Grammar for the Classroom	Test
Lesson 2	11:30am - 12:50am	6:00pm - 7:20pm	Grammar for the Classroom	Methodology 1	Methodology 2	Methodology 3	Lesson Planning
Lesson 3	1:30pm - 2:50pm	7:30pm - 8:30pm	Peer Teaching	Grammar for the Classroom	Peer Teaching	Introduction to PPP	Macro-Skill Development
Practicum	3:00pm - 4:00pm	3:00pm - 4:00pm	Practical Teaching & Observation	Practical Teaching & Observation	Practical Teaching & Observation	Practical Teaching & Observation	Test

### ENTRY REQUIREMENTS:

- ✓ 6.0 IELTS General Training Module; or
- ✓ TESOL Foundation pass; or
- ✓ Greenwich College Entry Test every Tuesday and Thursday at 9:00am and 4:00pm
- ✓ BC Entry Test through registered overseas representatives

### COURSE OUTLINE:

Good teaching requires both knowledge and experience. In the TESOL course, we ensure trainees get plenty of both. Our team of highly qualified and experienced trainers create a comfortable and stimulating environment to study this challenging subject. The course aims to produce confident, competent and independent teachers who have a solid base of knowledge on which to build with experience. Trainees receive firsthand experience teaching foreign students so they graduate feeling confident and prepared.

### TEACHING PRACTICUM

Each trainee will complete a minimum of six hours, assessed teaching practice. Every afternoon (Monday-Thursday) trainees will host English classes for students from all over the world.

These classes are the perfect way to apply all the skills and techniques taught and practiced in the TESOL lessons. Both Day and Evening students will attend as either teachers or observers.

### UNIT DESCRIPTIONS:

ELEMENT	DESCRIPTION
TEA-A4PAS Plan assessment	This unit focuses on how to plan, choose, adapt and adjust assessment tasks in the ESL context, as well as addressing ethical considerations when assessing. It also elaborates on some of the most common international assessment systems.
TEA-D4GRA Facilitate the learning of grammar	Many trainee teachers are unsure of the common structures of English grammar. This unit explains the most common structures as well as how to teach grammar in a fun, communicative way. You will also see and take part in demonstration grammar lessons.
TEA-D4MSD Facilitate macro skill development	Teaching the four macro skills (reading, writing, listening and speaking) requires specific approaches and techniques. Learn about these approaches and see examples of the techniques in practice. Also learn how to pitch work at the correct level for the students and make lessons from real stimuli.
TEA-D4PRN Facilitate pronunciation skill development	Learn about the phonemic alphabet, how the tongue and mouth work, individual and combination sounds, prosodic (stress) features of English, and spelling rules.
TEA-D4TMA Select and apply TESOL methodology	Focusing on student needs, this unit helps you to understand how to best select and implement methods and techniques for a communicative, active classroom. Also learn what NOT to do!
TEA-D4TST Use TESOL skills and techniques	Methodology is nothing without practice. Learn how to prepare and use teaching materials, how to use technology in the classroom, use the board effectively, give clear instructions, manage time, efficiently correct learners, assume a strong teaching persona and manage an adult learning environment.
TEA-E4WPT Work professionally in TESOL	Learn about career paths in TESOL, managing your professional development, OH&S, your duties as a teacher, and helping the environment through work practices.
TEA-P4PIL Plan individual lessons	Learn how to define and clarify your aims, build a balanced lesson plan, select and prepare materials, plan timing, predict problems, and self-evaluate your teaching.
TEA-P4PSL Plan a sequence of lessons	Teachers often need to plan for a week or more of classes. Learn about information gathering, needs analysis, planning, selecting and adapting resources, and how to evaluate these lessons.

### WORKING IN TESOL

"Finding a job in TESOL in this global climate is an attractive prospect for all graduates. More and more countries are placing a priority on learning English in order to bridge the communication gap among nations. Many national governments are looking for people with formal TESOL qualifications to teach English in both private and public school systems. Not only is this vocation highly esteemed, but it is also extremely rewarding. Established teachers all over the world will agree that there are few bigger rewards than finishing a lesson where the students leave the class with a smile on their face knowing that they have learnt something useful and have had fun while learning. Greenwich College is looking forward to showing our trainees how to work in TESOL and achieve some life-changing rewards." Justin Moon, Senior TESOL Trainer



'I have never had a study experience like this. I found the TESOL course quite challenging, but the trainers were so experienced and knew so much about teaching; they were always so supportive and helpful. I now have so much confidence in standing up in front of groups and making presentations and I think my English has improved a lot.'

Zenjiro Egawa  
(Japan)

## 11 REASONS WHY YOU SHOULD STUDY TESOL AT GREENWICH COLLEGE

1. Flexible study options - Day and Evening classes
2. Learn in an authentic international school environment
3. Teach with students from Asia, Europe, Africa and Latin America
4. Sydney's most experienced TESOL trainers
5. Course designed by Greenwich College and accredited by VETAB
6. Tremendous job opportunities around the world
7. Observe professional teachers at work
8. Build confidence in public speaking
9. 25 hours (day) face-to-face teaching per week
10. Improve your own understanding of English
11. Regular full school social activities

# Ready For Work



## READY FOR WORK:

Looking for work in your own country can be difficult, but this can sometimes be more difficult if you are an international student in another country. For most international students, working whilst studying is not only a way of supplementing their income, but also an opportunity to gain a wider experience and cultural appreciation of Australia.

Many international students often find work in hospitality, tourism, retail, and/or cleaning positions. That is why at Greenwich College we have created a suite of courses designed to give students the mandatory qualifications, skills, and knowledge to apply for these positions. *Note: Working restrictions may apply to your visa. Further information on working rights is available at <http://www.immi.gov.au>*

## RSA (Provide Responsible Service of Alcohol: THHBFB09B)



### COURSE OUTLINE:

There are over 14,000 licensed venues including bars, pubs, clubs, and restaurants in NSW employing full and part time staff. It is required by law for these people to have completed an approved RSA training course. The aim of this training program is to provide candidates with the knowledge and understanding required to act responsibly when selling, supplying or promoting alcohol in relation to their workplace duties, the law, customer service and safety.

### The RSA Program:

- ◆ Identify the context of RSA
- ◆ Awareness of drink-driving and prevention
- ◆ The impact of alcohol abuse
- ◆ Measuring the outcomes of RSA on premises
- ◆ Legislative framework for RSA
- ◆ Implementing RSA strategies
- ◆ The Liquor Act overview and Liquor industry code of practice
- ◆ Alcohol and your health
- ◆ Responsible promotion of liquor
- ◆ Intoxication – indicators and offences
- ◆ Signage in licensed premises
- ◆ Police powers

### COURSE OUTCOMES:

Upon successful completion of this course candidates will receive both a NSW Vocational Education and Training Accreditation Board (VETAB) and Casino, Liquor and Gaming Control Authority approved Statement of Attainment in 'Provide Responsible Service of Alcohol: THHBFB09B'. This will enable candidates to apply for positions in licensed venues throughout Australia\*. This course is approved by VETAB NSW and the Casino, Liquor and Gaming Control Authority under The NSW Office of Liquor, Gaming and Racing and satisfies the RSA training provisions.

*Note: Additional training and/or testing may be required in some states of Australia*

## RCG (Provide Responsible Conduct of Gambling: THHADG03B)



### COURSE OUTLINE:

It is mandatory for people working in the gaming industry (pubs, clubs, casinos and venues promoting the use of gaming machines, table games, Keno, TAB and all other gambling services), to have completed an approved RCG course. The aim of this course is to provide candidates with the knowledge and understanding required to identify and assist problem gamblers, provide assistance to family and friends and assist with self-exclusion procedures in order to minimise harm to the individual and community.

### The RCG Program:

- ◆ Describes the context of Gambling in NSW
- ◆ Explains the indicators and impact of problem gambling
- ◆ Describes the legislative framework for responsible conduct of gambling
- ◆ Methods of implementing responsible conduct of gambling strategies
- ◆ Lists the benefits of implementing responsible conduct of gambling practices

### COURSE OUTCOMES:

Upon successful completion of this course candidates will receive both a NSW Vocational Education and Training Accreditation Board (VETAB) and Casino, Liquor and Gaming Control Authority approved Statement of Attainment in 'Provide Responsible Conduct of Gambling' THHADG03B'. This will enable candidates to apply for positions in venues supporting gaming services throughout Australia\*. This course is approved by VETAB NSW and the Casino, Liquor and Gaming Control Authority under The NSW Office of Liquor, Gaming and Racing and satisfies the RCG training provisions.

Many Australian establishments provide gambling facilities and have a requirement that staff offer assistance to patrons who make requests for help, or who appear to be experiencing significant problems with their gambling. Problem gamblers can be assisted by being given clear information, or some contact information for voluntary self-help or treatment services. Employers who have any gambling facilities on their premises must have staff that have RCG certification.

*\* Additional training and/or testing may be required in some states of Australia*

## RFH (Follow Workplace Hygiene Procedures: THHGHS01B)



### COURSE OUTLINE:

It is becoming increasingly important (and compulsory in some sectors) in the food handling and service industry throughout Australia to hold a certificate in RFH. The aim of this course is to provide candidates with the skills and knowledge required to prepare and handle food safely, as required by national food safety laws. Candidates will be able to demonstrate the new food laws, food safety practices, health and personal hygiene obligations, and kitchen hygiene. This unit is part of the Hospitality Training Package.

### The RFH Program:

- ◆ Identification of food contamination
- ◆ What causes food poisoning?
- ◆ HACCP
- ◆ Personal hygiene
- ◆ Control of pests
- ◆ ANZFA guide to Food Safety Standards
- ◆ Implementing the new NSW Government Acts & regulations
- ◆ Cleaning, storage and prevention

### COURSE OUTCOMES:

Upon successful completion of this course candidates will receive a NSW Vocational Education and Training Accreditation Board (VETAB NSW) approved Statement of Attainment in 'Follow Workplace Hygiene Procedures THHGHS01B' enabling candidates to apply for positions in the Food Handling and Preparation industry. This course is approved by VETAB NSW and satisfies the RFH training provisions.

NSW has around 50,000 food businesses which must notify their activities to the NSW Food Authority. These include bakeries, B&Bs, beekeepers, butchers, canteens, charity groups, delicatessens, health food shops, home delivery services, hotel/motel operations, kiosks, licensed clubs, food manufacturers and packers, pharmacies, pubs, restaurants, service stations, street vendors, takeaways, food transporters and wineries. Students with this RFH certificate will get a good head start with employers who are continually looking for people who are able to practise good workplace hygiene to ensure sanitation in their workplace.

### VOCATIONAL OUTCOMES

Greenwich College's vocational programs offer excellent career pathways for all graduates. The Certificate IV in EAP provides direct pathways into many of Australia's leading colleges and universities as well preparing students for academic life in an English speaking environment. The Certificate IV's in TESOL and TECSOL lead directly into teaching positions both in Australia and abroad. These programs give you the head start you need into a fulfilling career.

### Recognition of Prior Learning (RPL)

Recognition of Prior Learning (RPL) is the assessment process that assesses a person's skills and knowledge they have achieved through informal education and training, as well as course credit for previous formal education and training. Greenwich College's RPL assessment policy complies with the Australian Quality Training Framework (AQTF).

Students considering applying for RPL at Greenwich College should contact the College for an RPL Application form. Those studying on a student visa should note that under Australian visa requirements, students need to study full-time (a minimum of 20 hours per week) and that RPL may reduce the duration of a course.

### Flexible Learning and Assessment

Greenwich College's Learning and Assessment policy incorporates flexibility in the delivery method and assessment of students in a fair and equitable manner. This is reflected in the different teaching approaches and learning methods as well as flexible assessments to meet individual special learning needs. An important focus is placed on the student achieving the required learning outcomes, competencies, and/or the standards rather than just the method itself.

## FREQUENTLY ASKED QUESTIONS

### What do I do after arriving in Australia?

Greenwich College has several services available to students arriving in Australia. The College can organise someone to meet you at the airport. The College can also arrange homestay accommodation for you. Homestay allows students the opportunity to live in a local home, experience a different culture and practise your English. To arrange an airport transfer or homestay, please advise Greenwich College at time of application. Students who have not arranged any transfers or accommodation with the College can easily catch a bus, train, or taxi to one of Sydney's many accommodation options including hotels, hostels, and/or share accommodation.

### What time should I arrive at Greenwich College on my first day?

Day students should arrive before 9:00am whilst Evening students should arrive before 4:00pm. You must bring your passport and writing materials (pen and paper).

### What will I do on my first day?

After Registration and Orientation all new students will take the Greenwich College English Placement Test. Based on your test results, you will be given a textbook and placed in the appropriate level class. Students studying IELTS, EAP, TECSOL, and/or TESOL who have already been tested will be given their textbooks and introduced to their class.

### Do I need to attend orientation?

All students need to attend orientation on their first day at Greenwich College. The orientation process will provide you with useful information about the College, the College rules and regulations, your rights and responsibilities, visa regulations and an introduction to support and welfare services.

### Do I need to buy extra textbooks?

You will be given textbooks appropriate for your class and level in addition to study materials from your teacher during lessons. These textbooks are yours to keep enabling you to study and revise your lessons not only in class but in your own time.

### Will I have access to computers?

You will have access to computers with internet. Greenwich College also offers wireless internet services for students with laptop computers.

### Can I take a holiday during my studies?

Holiday leave will depend on your visa regulations and your studies at Greenwich College. To apply for leave you must give the College at least one week's notice which must be approved.

### How much will my English improve?

This varies between every student. However Greenwich College provides small classes, carefully selected native English speaking teachers, and the most innovative and highest quality English Language and Teacher Training programs available to optimise your progress.

### Will Greenwich College help me with entry requirements to study at Australian institutions?

Greenwich College has excellent partner pathways (direct entry agreements) into some of Australia's leading colleges, TAFE NSW, and universities through these programs. Greenwich College has a number of excellent programs to help prepare you for entry into Australian institutes such as IELTS Preparation and/or Certificate IV in English for Academic Purposes (EAP). Further information on pathways is available on page 7 or by contacting the College.

### Who will help me if I have a problem in Sydney?

Greenwich College employs counsellors to assist students along with the Student Services Manager. Everyone at Greenwich College wants your time at the College and in Australia to be a learning and memorable experience so we are here to assist you in anyway should you have any issues.

### Do I need to have Health Cover/Insurance?

It is a Student visa condition that you have Overseas Student Health Cover (OSHC) for the duration of your stay in Australia. OSHC will contribute towards unexpected medical and hospital expenses that you may incur while you are studying in Australia. Greenwich College can arrange your OSHC for you through Medibank Private at time of application. Further information on OSHC and Travel Insurance is available at <http://www.medibank.com.au>.

### Can I work in Australia while I study?

International students in Australia on a Student visa (with work rights) can work up to 20 hours per week during course time and unlimited during scheduled course breaks. Those on a Working Holiday visa are also permitted to work whilst in Australia. Further information on working rights is available at <http://www.immi.gov.au>.

### Is Greenwich College accredited by the Australian government or other official accrediting authority?

Greenwich College is accredited by the National ELT (English Language Teaching) Accreditation Scheme (NEAS), as well as being a Registered Training Organisation (RTO) recognised by the Vocational Education and Training Accreditation Board (VETAB).

Greenwich College is also a member of the Australian Council for Private Education and Training (ACPET), an Authorised TOEIC Test Centre, and an approved IELTS Pre-Test Centre.

### National ELT (English Language Teaching) Accreditation Scheme (NEAS)

NEAS is Australia's national accreditation scheme for English Language Teaching (ELT) centres. Its aim is to maintain a high standard of English Language Teaching in Australia.

### Reasons why you should study at an English Language School accredited by NEAS:

- NEAS is the only accreditation scheme for ELT in Australia recognised by Commonwealth and State Governments
- NEAS is a national scheme which accredits ELT centres in all sectors
- NEAS accreditation ensures that the college meets national quality standards
- NEAS makes regular visits to accredited colleges to inspect them and to ensure that the standards are being met

Greenwich College is an accredited NEAS English Language school. Further information is available at the NEAS website <http://www.neas.org.au>.

### Vocational Education and Training Accreditation Board (VETAB)

VETAB is the recognition and registering authority in NSW for all training organisations that issue Australian Qualifications Framework (AQF) qualifications and statements of attainment.

### Registered Training Organisations (RTOs):

- Are recognised as providers of quality assured and nationally recognised training and qualifications
- Can issue qualifications and statements of attainment that are nationally recognised
- Can use the VETAB and Nationally Recognised Training (NRT) logos
- Are approved to provide courses to overseas students studying in Australia and are listed on the Commonwealth Register of Institutions and Courses for Overseas Students (CRICOS)

Greenwich College is a Registered Training Organisation by VETAB the registering authority in NSW. Vocational courses (showing this logo) are accredited by VETAB.

Further information is available at the VETAB website <http://www.vetab.nsw.gov.au>

### Nationally Recognised Training (NRT)

The NRT logo represents that the provider is a Registered Training Organisation and is registered to offer training and assessment services that lead to nationally recognised Australian Qualifications Framework (AQF) qualifications or statements of attainment under the Australian Quality Training Framework (AQTF). The AQTF is the national set of standards which assures nationally consistent, high quality training and assessments in Australia.

Further information on AQTF and AQF is available at <http://www.training.com.au> and <http://www.aqf.edu.au>

### Australian Council for Private Education and Training (ACPET)

ACPET is the national industry association for independent providers of education and training for Australian and international students and a provider of the Overseas Student Tuition Assurance Scheme (OSTAS).

The OSTAS scheme complies with the requirements of the Education Services for Overseas Students (ESOS) Act 2000. The purpose of the ESOS Act and OSTAS is to protect the interests of people coming to Australia on student visas, providing tuition and financial assurance and by ensuring a nationally consistent approach to provider registration.

Greenwich College is a member of ACPET and a full participating member of OSTAS.

Further information on ACPET and OSTAS is available at <http://www.acpet.edu.au>

### Test Of English for International Communication (TOEIC®)

The TOEIC® Test is internationally recognised and is the most widely used General Business English Language Exam with more than 5 million tests undertaken each year.

Greenwich College is an Authorised TOEIC® Test Centre.

Further information on the TOEIC® Test is available at <http://www.pro-match.com/toeic>.

### Department Of Immigration And Citizenship (DIAC)

DIAC provides information for people who want to visit, work, study or live in Australia. People wanting to come to Australia should visit the DIAC website for further information on the types of visas available to them, the individual entry requirements, and for contact details of their nearest departmental office.

Further information on visas and entry into Australia is available at <http://www.immi.gov.au>.

### Overseas Student Health Cover (OSHC)

OSHC ensures international students have insurance to assist in the costs associated with medical care, ambulance services, pharmaceuticals, and hospital care during their stay in Australia. Greenwich College can arrange your OSHC through Medibank Private.

As one of Australia's largest private health insurers, Medibank Private is committed to providing outstanding service and affordable Overseas Student Health Cover (OSHC).

Medibank Private helps students by including additional services as part of their OSHC cover, such as:

- Face to face service at about 100 Medibank stores across Australia
- Access to a 24 hour emergency assistance telephone line - 1800 234 601
- Access to discounts on fun things like movie tickets, magazine subscriptions and more through Feel Better Rewards
- Payment of benefits directly into a student's Australian bank account
- Access to a short term counselling service through the telephone, email or a real-time web service.

Further information on OSHC and Medibank Private is available at <http://www.medibank.com.au/oshc>





Level 3, 127 Liverpool Street  
 Sydney NSW 2000 AUSTRALIA

Totally Trained (International) Pty Ltd trading as:  
 Provider CRICOS Code: 02672K  
 ABN 31 114 584 940

Tel: (+61 2) 9264 2223  
 Fax: (+61 2) 9264 2224

info@greenwichcollege.com.au  
 www.greenwichcollege.com.au



**Greenwich  
 College**